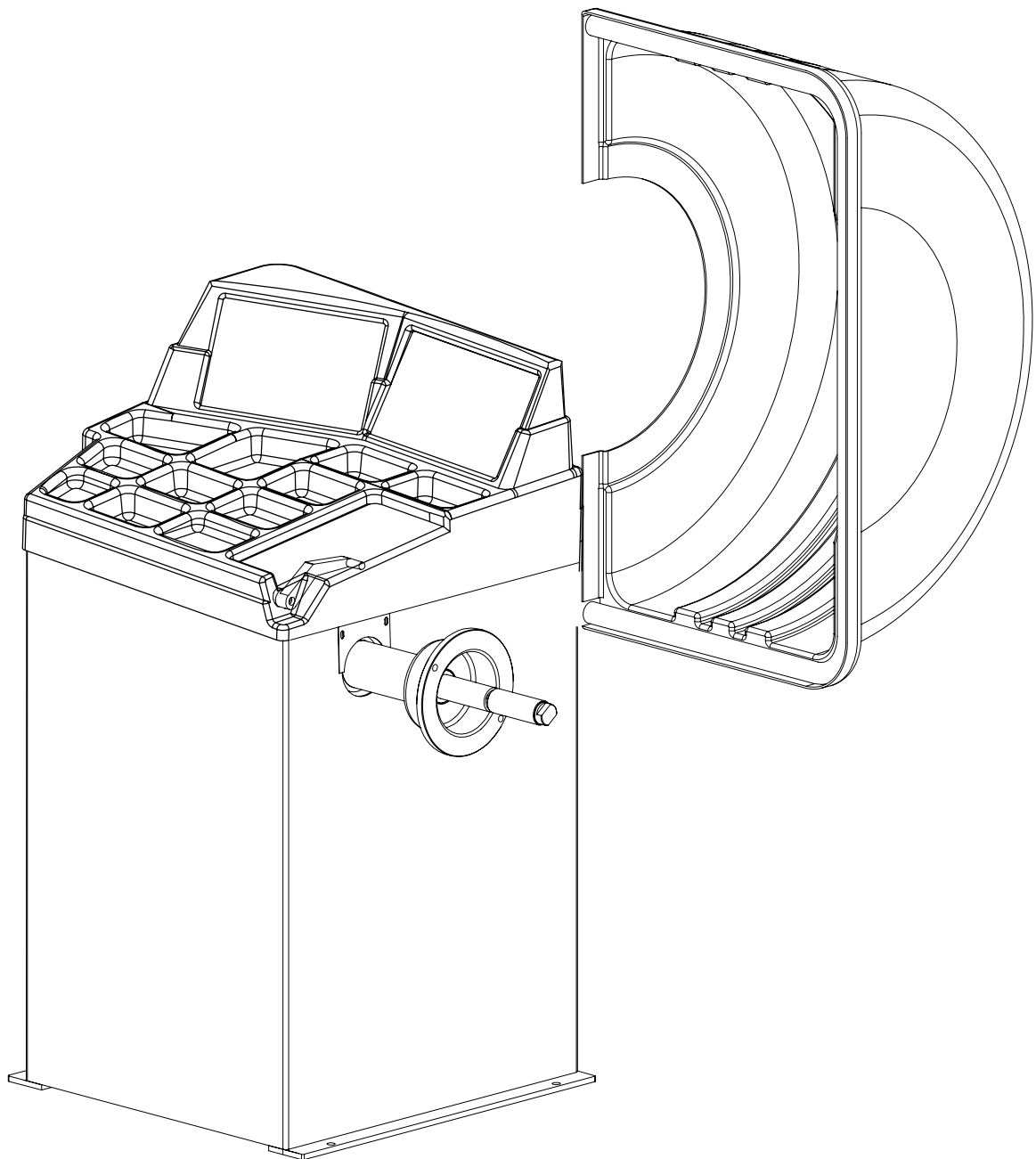


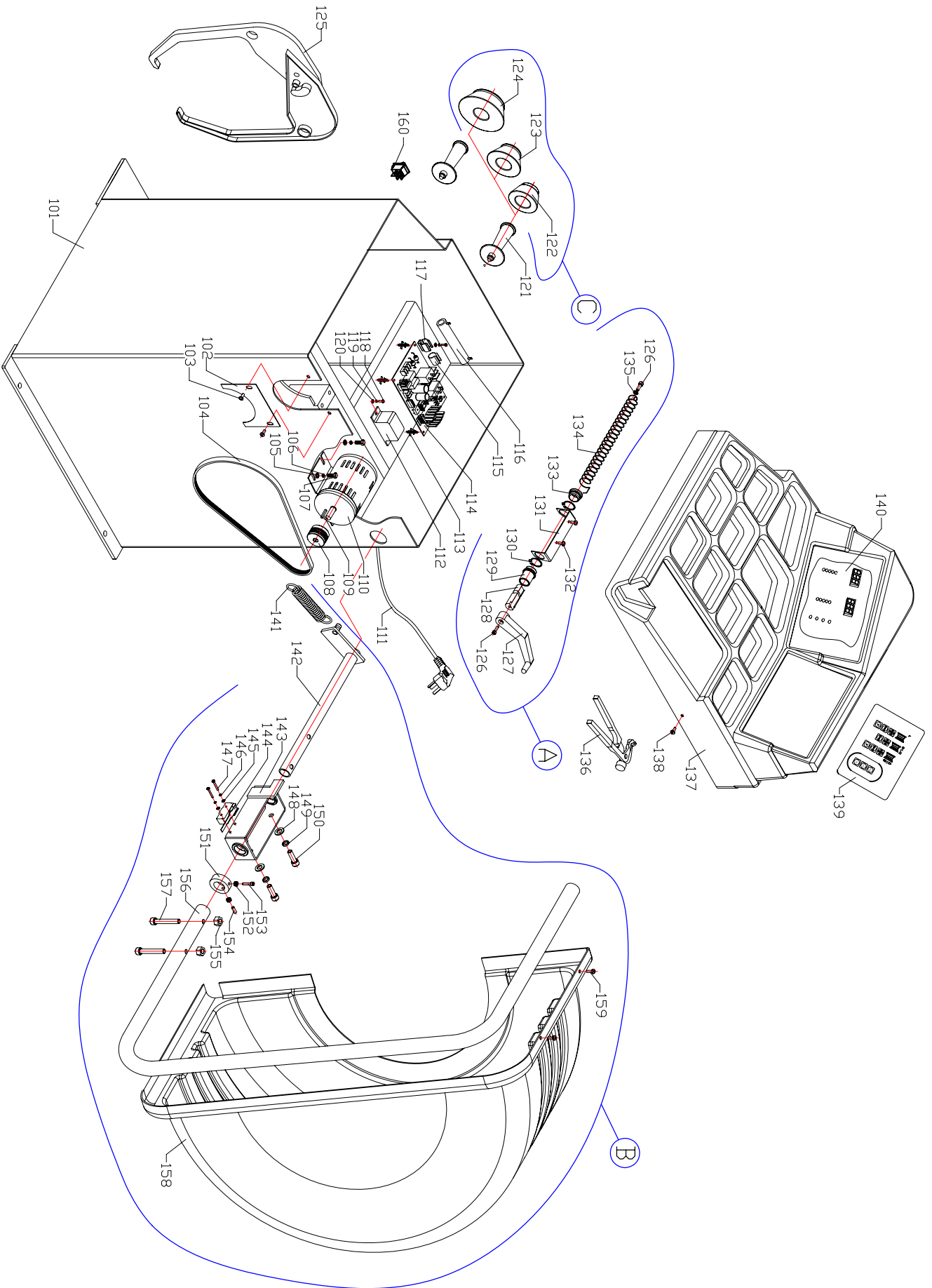
CB1920B WHEEL BALANCER

QJ/GM. CB920. 00F-2006-B



05. 02. 23

CB1920B SPARE PARTS-BODY



CB1920B SPARE PARTS-BODY

QJ/GM. CB920. 00F-2006-A

Ref.	Code	Description	Specification	Q' ty	Note
101	CB920. 01. 00	Body		1	
102	CB900. 00. 04	Plank		1	
103		Screw	M5X12	2	
104		Strap		1	
105		Flat washer	8	4	
106		Elastic washer	8	4	
107		Screw	M8X25	4	
108	CB900. 00. 02	Pulley		1	
109		Disk key	C5X5X20	1	
110		Motor	220V/50HZ	1	
111		Power cable		1	
112		Voltage transfer		1	
113		Plug		4	
114		Power board		1	
115		Insulation paper		1	
116		Resistance		1	
117		Resistance clip		1	
118		Screw	M4X10	2	
119		Elastic washer	4	2	
120		Flat washer	4	2	
121		Handle		2	
122	B-P. 01. 03A	Small cone		1	
123	B-P. 01. 04A	Medium cone		1	
124	B-P. 01. 05A	Large cone		1	
125		Caliper		1	
126		Screw	M6X16	1	
127		Scale handle		1	
128	B-L. 01. 02	Scale		1	
129	B-L. 01. 05	Front spacer of scale		1	
130		Seeger ring	25#	1	
131	B-L. 01. 06	Scale bracket		1	
132		Screw	M5X12	2	
133	B-L. 01. 07	Rear spacer of scale		1	
134	B-L. 01. 01	Spring		1	
135		Flat washer	6	5	
136		Balancing hammer		1	
137		Weight tray		1	
138		Screw	M5X12	3	
139		Panel		1	
140		Computer board		1	
141	B-F. 01. 06	Spring		1	
142	B-F. 01. 05. 00	Pipe		1	
143	B-F. 01. 04. 00	Bracket		1	
144		Stroke switch		1	
145		Flat washer	4	2	
146		Elastic washer	4	2	
147		Screw	M4X30	2	
148		Flat washer	10	2	
149		Elastic washer	10	2	
150		Screw	M10X20	2	
151	B-P. 01. 11	Fixing spacer		1	
152		Nut	M6	2	
153		Screw	M6X40	1	
154		Screw	M6X16	5	
155		Locknut	M10	2	
156	B-F. 01. 02	Pipe	M10	1	
157		Screw(half buckle)	M10X50	2	
158	B-F. 01. 01	Protection cover		1	
159		Screw	M5. 5X25	4	
160		Switch		1	
A	B-L. 01. 00	Scale assembly		1	
B	B-F. 01. 00	Protection cover assembly		1	
C		Cone assembly		1	
D		Connecting lines			

CB1920B SPARE PARTS-SHAFT

QJ/GM. CB920. 00F-2006-B

Page 2 of 2

